



Building a Better World

-

:

.

2009



<b>3</b> .....		
<b>8</b> .....		<b>1.0</b>
<b>9</b> .....		<b>2.0</b>
9.....	2.1	
9.....	2.2	
<b>11</b> .....		<b>3.0</b>
11.....	3.1	
14..... Partnership Models	3.2	
<b>16</b> .....		<b>4.0</b>
16.....	4.1	
16.....	4.1.1	
17.....	4.1.2	
18.....	4.1.3	
19.....	4.2	
20.....	4.3	
21.....	4.4	
23.....	4.5	
23.....	4.5.1	
25.....	4.5.2	
<b>27</b> .....		<b>5.0</b>
<b>29</b> .....		<b>6.0</b>
<b>31</b> .....		<b>7.0</b>
<b>33</b> .....		<b>8.0</b>
<b>38</b> .....		<b>9.0</b>
<b>42</b> .....		<b>10.0</b>



:

:\_\_\_\_\_ .a

:\_\_\_\_\_ .b

( )  
( )

.(

:\_\_\_\_\_ .c

( )

.( )

:\_\_\_\_\_ .d

( )

)

.(

/

:\_\_\_\_\_ .e

:\_\_\_\_\_ .f

10

20

:\_\_\_\_\_ .g

.2

.3

.4

.5

.1

.2

.3

.4

.5

.6

.7

**.8**

.9

.10

.11

.12

2000 1

.13

) 2000

%8

.(

- -

)

1(

2





LDR

- 
- 
- 
- 
- 
- 
- 
- 
- 

)

)

( )

(  
(

26

( )

80

10

20

2009

6

50

( 9 15 36) 60  
5 14

:  
.  
( )

3.0

3.1

" : 1987

"

3.

" :

4."

" :

5."

( P<sup>3</sup> PPP Partnership Public - Private )

:

6.

- (1)

- 7

:

Commitment

❖

Continuity

❖

www.wikipedia.org

3

"

:

10-11-2009

4

.www.doha-shares.com

" 5

"

.2004

(www.alsabaah.com) 2009

"

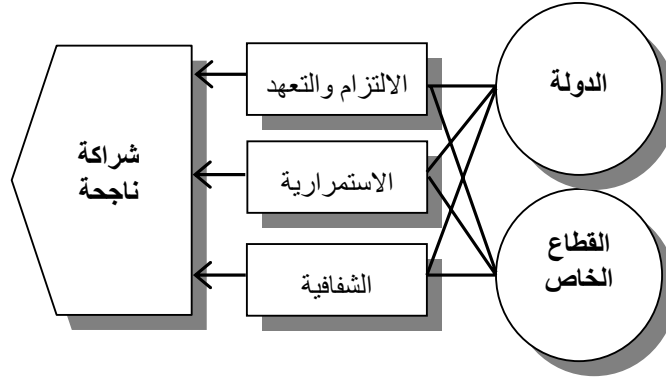
" 6

"

-

" 7

.2003



شكل رقم (1): أسس الشراكة الناجحة بين القطاع العام والخاص

	:	
		.1
		.2
_____		.3
( - )		.4
" "		.8
		.1
		.2
<b>Partnership Models</b>		<b>3.2</b>

(2)

10.

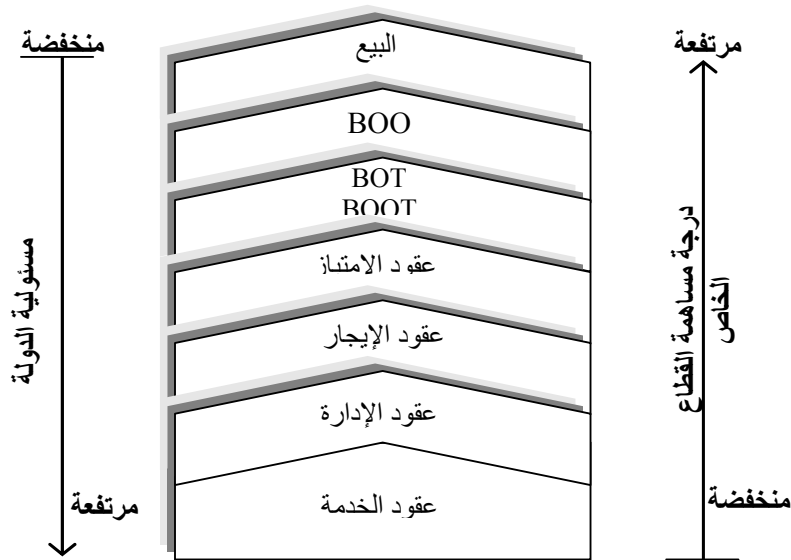
Build, Operate, Transfer "BOT"

.Build, Own, Operate, Transfer "BOOT"

.Build, Own, Operate "BOO"

.(

)



:(2)

Service Contracts

.1

1994.	-	-	-	-	-	9
2000.	-	-	-	-	-	7

Management Contracts .2

Leasing Contracts .3

( ) ( 10-6)

Concession Contracts .4

30 15

Build, Operate, Transfer (BOT) 5.0

BOT

Build, Own, Operate, Transfer (BOOT) 6.0

BOOT

BOT

Build, Own, Operate (BOO) 7.0

4.0

4.1

4.1.1

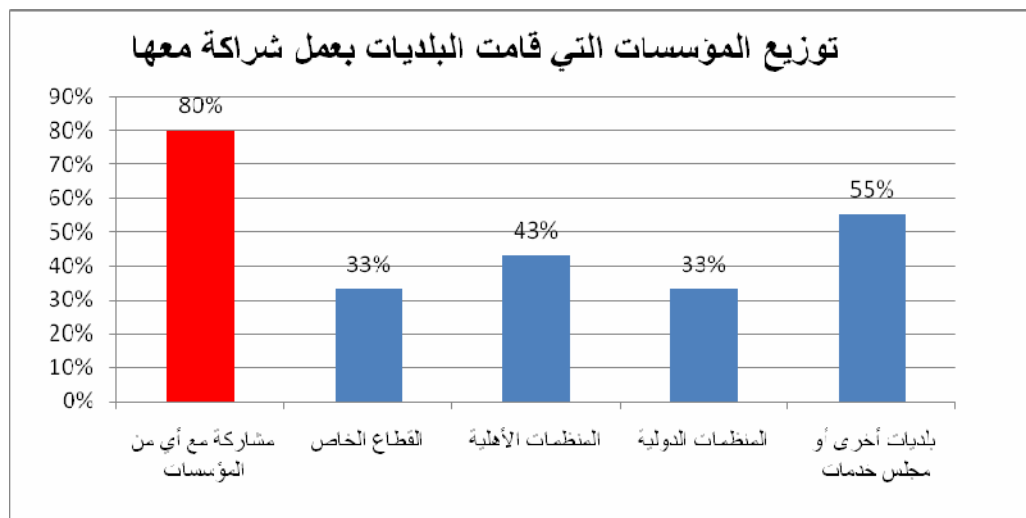
%80

%43

(3)

%33

(%55)



(3):

( )

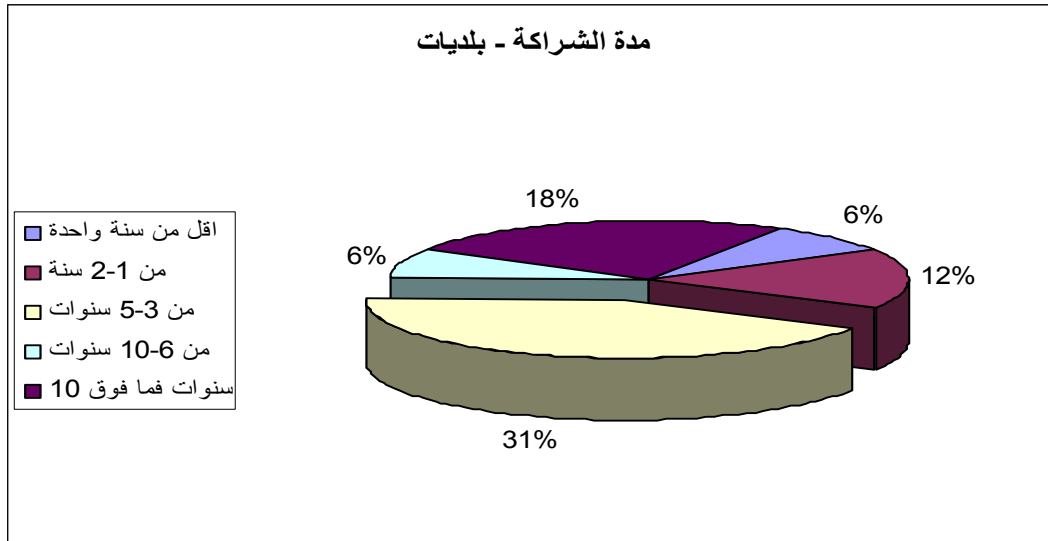
%75

4.1.2

%45

6

%55



:(4)

%31

(4)

%18

5-3

(%65)

%6

( )

.(%35)

4.1.3

%42

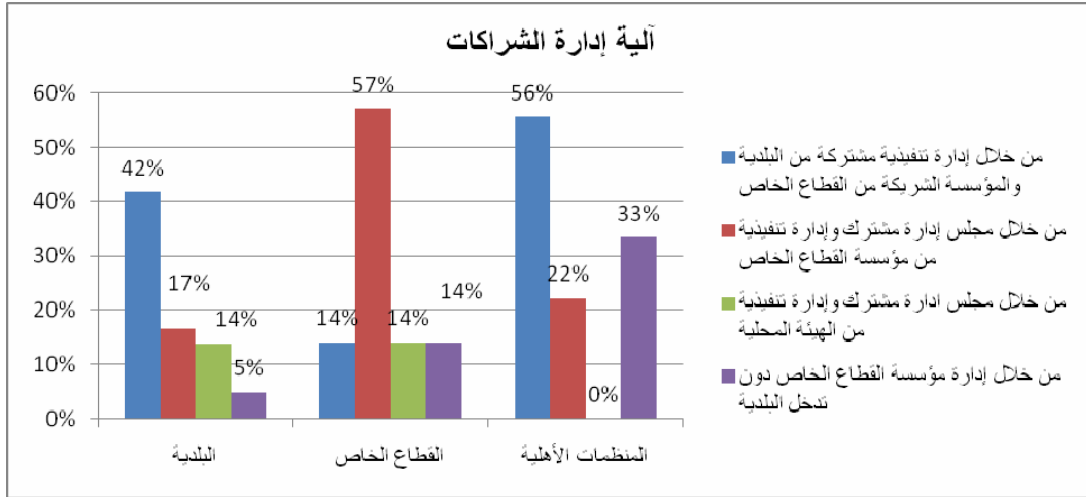
%17

%39

%50

.(5)

-



(5):

4.2

(6)

%53

%37

%58

( ) .

%42

%70

%50

%50

%25

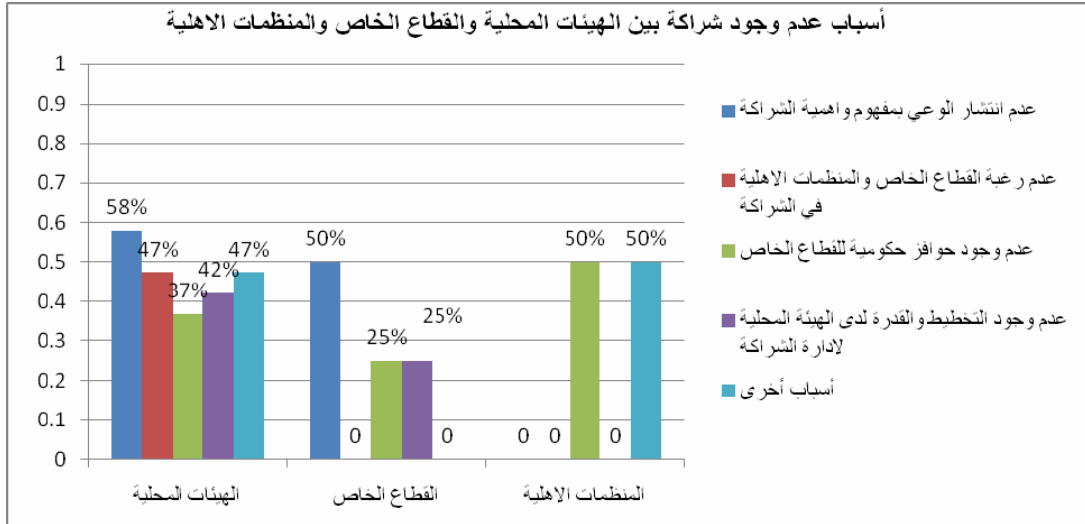
)

.(

%25

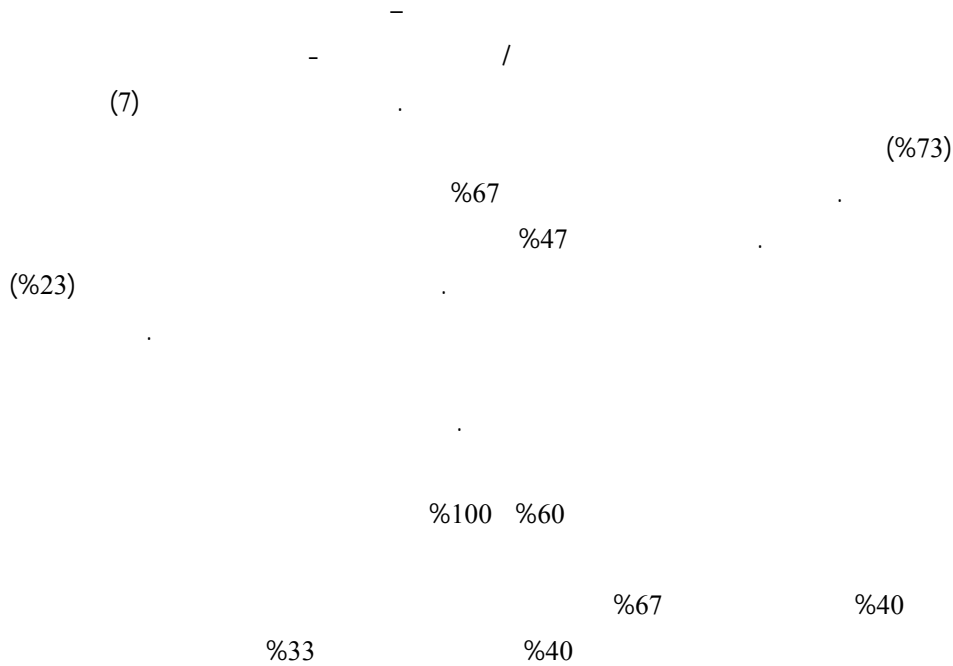
%30

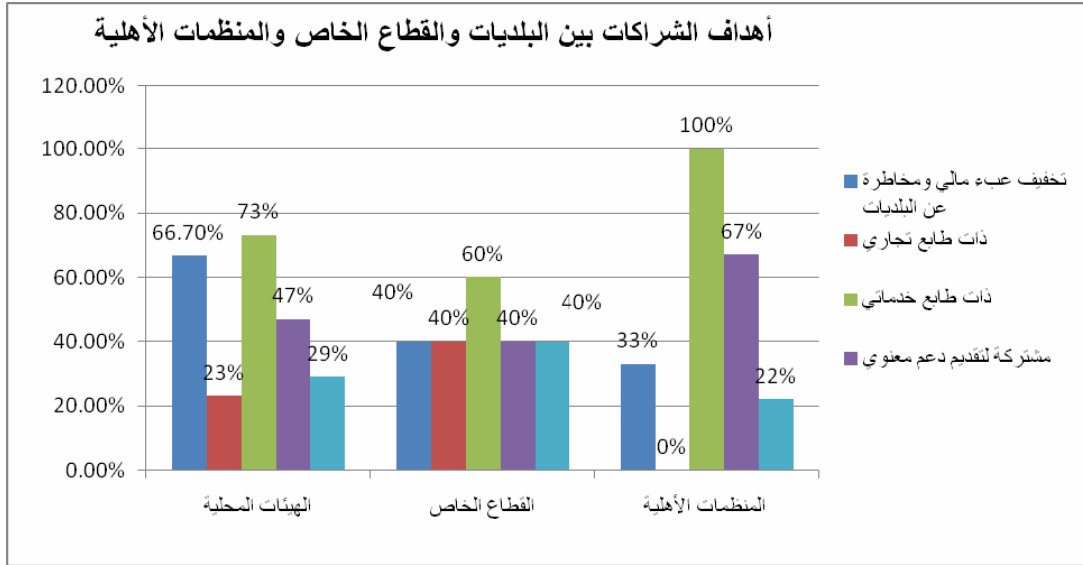




(6):

4.3





(7):

4.4

(71%)

%67

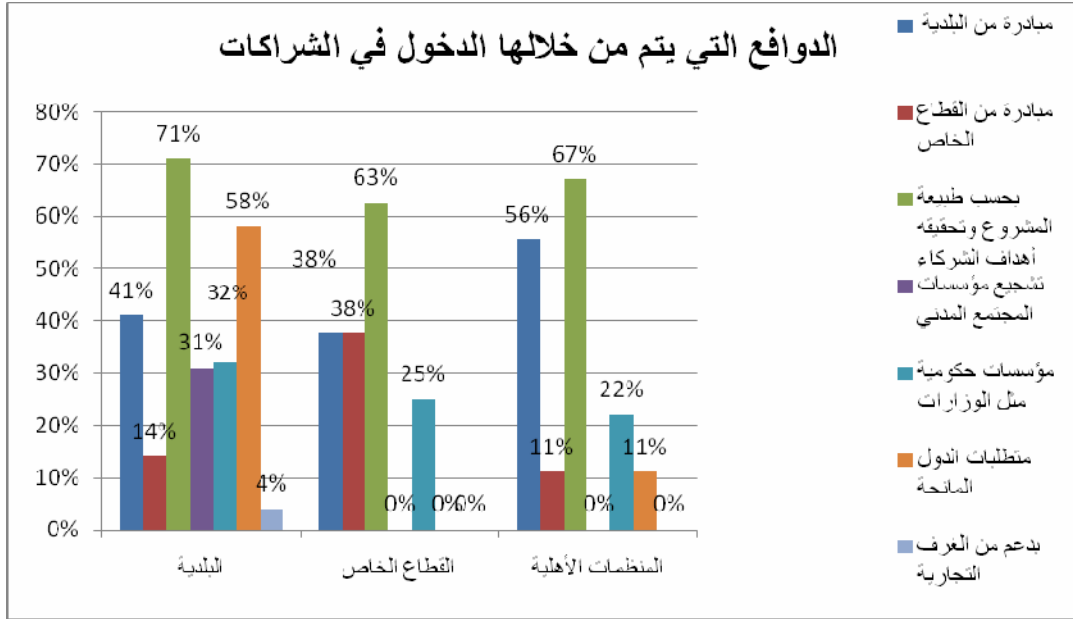
%63 (8)

(8)

(50%)

%22

%25



(8):

4.5

(10)

:(Leasing Contract) .1

(lump sum)

(percentage)

%25

.a

.b

.c

( )

.d

.e

:BOT-Build-Operate-Transfer - - .2

.a

.b

.c

.a

.b

:Capital Investment Partnership .3

.a

.b

.c

.d

.e

.a

.b

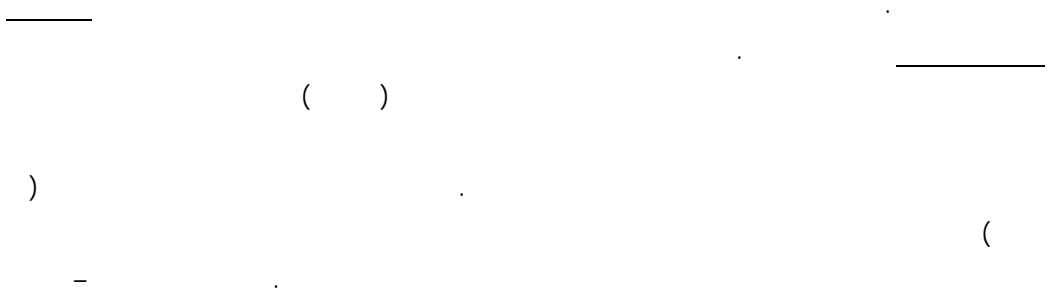
.c

:Beneficial Partnership .4

( )

( )

4.5.2



11

5.0

:

5.1

%25

:( )

5.2

( )

12

( 420)

5000

:( )

5.3

28

(... )

: 5.4

500

" "

170

Leasing

.Contracts

: 5.5

10

37

27

%50

20

%38 " "

:( ) 5.6

( )

: 5.7

Investment Partnership

2

% 65.5

% 34.5

5.8

(BOT - - - )

(24)

(15)



( )

/

6.0

/

:

•

(15)

-

-

(

)

2

(

)

1997 (1)  
(15)

•

•

1

.(

)

1998

•

•

•

•

7.0

:

-

-( )

( )

:

- .1
- .2
- .3
- .4

- 
- 
- 
- 
- 
- 
- 

:

8.0

8.1

8.2

( ) :

” ”

8.3

8.4

8.5

.

.

:

.1

.2

.3

.4

.5

.7

.8

.9

.10

:

•

•

•

•

•

•

- 
- 

9.0

.6

: \_\_\_\_\_ .a

: \_\_\_\_\_ .b

( )

( )

.(

: \_\_\_\_\_ .c

( )

.( )

: \_\_\_\_\_ .d

( )

)

.(

: \_\_\_\_\_ .e

/

: \_\_\_\_\_ .f



20

: \_\_\_\_\_ .g

.7

.8

.9

.10



10.0

: 10.1

.1997

( ... )

:(1)

CHF			#
•	•		1
•	•		
•	•		
•	•		2
•	•		
			3

	Partnership Governance Model		4
Partnership creation model			5
			6

: 10.2

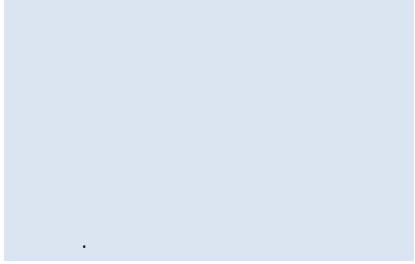
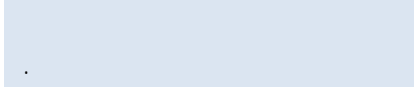
:(2)

CHF			#
"	•	[Redacted]	1
"	•	1998 1	2
•	•	[Redacted]	3
•	.PCU "	"	4
•	•	[Redacted]	5
•	•	[Redacted]	6

(Social

Responsibility Fund)

:(3)

CHF			#
•	•	• • •  •	1
		• 	2

:(4)

CHF			#
• " "	•	.	1
•	•		2
•	•	1 2000	3

	:	
<a href="http://www.pfi.ps">www.pfi.ps</a>	1.0;	<a href="http://www.apla-pal.org">www.apla-pal.org</a> ; <a href="http://www.paltrade.org">www.paltrade.org</a>
"	:	" 2.0
		.2007
<a href="http://www.wikipedia.org">www.wikipedia.org</a>		3.0
"	:	" 10-11-2009 4.0
		<a href="http://www.doha-shares.com">www.doha-shares.com</a>
"		" 5.0
		.2004
<a href="http://www.alsabaah.com">www.alsabaah.com</a>	() 2009	" 6.0
"	-	" 7.0
		.2003
-	-	- 8.0
		.1994
		9.0
		.2000
"		" 10.0
		.2008
:	15	11.0
		12.0
		13.0
		14.0
( )	:	15.0
		( )
		16.0



:

. .1

. .2